

# SPECTRO-UV®

## uVisionMAX Series

UV-A/White Light LED NDT Inspection Lamp  
Part No. UV-365MAXHC, UV-365MAXMHC

TESTED  
TO COMPLY WITH



ASTM E3022-25  
Standard



ISO 3059:2012



RRES 90061:2014



AIRBUS

AITM6-1001  
Issue 15



Pratt & Whitney

UV-A Inspection  
Requirements



**RoHS**  
Compliant



# SPECTRO-UV®

[www.Spectro-UV.com](http://www.Spectro-UV.com)

4 Dubon Ct., Farmingdale, NY 11735  
866-230-7305

**⚠ WARNING**

**UV emitted from this product. Avoid eye and skin exposure to unshielded products.  
FOR PROFESSIONAL EXAMINATION USE ONLY**

**IMPORTANT SAFETY INSTRUCTIONS (Read all instructions)**

- Do not operate the **uVisionMAX Series UV-A/White Light LED NDT Inspection Lamp** with a damaged cord or if the lamp has been physically damaged.
- Do not look directly into the light. **ALWAYS** wear the UV-absorbing protective glasses provided when operating the lamp. Use in low-light conditions to achieve the best inspection results. The darker the room, the greater the fluorescent contrast.
- The uVisionMAX is not approved for use in hazardous atmospheres. Do not attempt to use it in areas requiring explosion-proof lighting.
- Never use this equipment in any manner not specified in these instructions because your protection may be impaired.
- **NEVER** aim the lamp in the direction of another human being. **It is meant for professional fluorescent inspections ONLY!**
- **DO NOT** attempt to modify the lens assembly or light output. Doing so may alter the performance and intensity of the uVisionMAX.

**OPERATION**

- The uVisionMAX series UV-A inspection lamps are available in three versions: **UV-365MAXHC**: heavy-duty corded operation; **UV-365MAXZHC**: battery-only operation, and **UV-365MAXMHC**: mobile version that operates on both corded power and battery.
- Cord options are shipped with the correct cord installed for the country of destination.
- The lamp has a three-position rocker power switch (II – UV; O – off; I – white light) on the handle.
- uVisionMAX - series have White Light Intensity Adjustment Controls located on the back plate of the lamp. The Battery Indicator is also located on the back plate of the lamp. When the battery is nearly depleted, the light will flash between Red and Orange. Detailed instructions for recharging the battery are located on Page 4.
- **WARNING:** Be sure to use genuine uVisionMAX replacement parts. Using another manufacturer's replacement parts could affect product performance and will void the warranty.



**CHANGING THE LAMP POWER SUPPLY**

The appropriate cord for the country of destination will be installed on the lamp when it is ordered. The power cord is integrated into the lower portion of the lamp handle, forming a cord/handle assembly.

**DISASSEMBLING THE FILTER PROTECTOR FOR MAINTENANCE**

The outer rubber cover/filter holder may be removed periodically to clean the Borofloat® glass filter. To disassemble the Borofloat® Filter Protector (FP-600), first remove the front rubber cover/filter holder. Peel the rubber cover/filter holder toward the front portion of the lamp.



The Borofloat® glass filter will remain inside the protector. To remove the Borofloat® glass filter, peel around the edge of the rubber cover/filter holder and push the glass filter out. To replace or reinsert the Borofloat® glass filter into the rubber cover/filter holder, slide the Borofloat® glass filter into the channel of the rubber cover/filter holder. Manipulate the rubber cover around the filter. Ensure the glass filter is evenly seated.

**REPLACING THE UV LENSES**

The UV-A lenses covering the four UV-A LEDs must be replaced over time. They will solarize (become cloudy and yellow) from repeated use.

**ENVIRONMENTAL SPECIFICATIONS**

The uVisionMAX series lamps are designed to be safe under the following conditions:

- For Indoor/Outdoor Use (dustproof and protected against jets of water);
- Temperature 41°F to 122°F (5°C to 50°C);
- Mains supply voltage fluctuations do not exceed 10% of the nominal voltage.

**LIMITED WARRANTY**

The warranty policy for the uVisionMAX lamp is provided on the Certificate of Limited Warranty enclosed separately with each unit. NOTE: For assistance of any kind, please contact the Customer Service Department at Spectro-UV. Provide the model, the serial number of the unit, and the date of purchase. The unit's serialization information is located (1) on the packaging the unit is shipped in, (2) engraved on the unit's handle, and (3) labeled on the reverse side of the unit's back plate.

<b>BATTERY LED INDICATOR STATUS (BATTERY VERSION NLY)</b>
Orange = Power on, battery good
Blink Orange and Red = Low Battery; time left approx. 10 – 15 mins
Red = Dead Battery, approx. 5 minutes or less remaining
Shut Down

## CHARGING AND USAGE OF LITHIUM-ION BATTERY PACKS:

- UV-365MAXZHC model uses a battery integrated into the handle, while the UV-365MAXMHC employs an external battery pack (model BP-30A).
- The batteries are 4-cell, 14.8 V DC, 3500 mAh lithium-ion batteries.
- They must be fully charged before first use.
- Check if the voltage of the battery charger matches the voltage of the AC outlet.
- Align the male connector of the smart charger to the female connector of the battery pack (BP-30A) and plug them together. Twist the ring on the charger connector to make a tight connection.
- Attach the AC cord supplied to the charger and plug the unit into a properly regulated AC outlet.
- The indicator light on the charger will show Red while it is charging and Green when the battery is charged. A full charge will take approximately 2 hours.

**WARNING: Use only the charger provided with IN-HANDLE and BP-30A battery packs. Do not use chargers intended for other battery chemistries (such as NiMH, NiCd, or lead-acid) or third-party chargers that are not explicitly rated for this model, as doing so may cause overheating, thermal runaway, fire, explosion, permanent battery damage, personal injury, property damage, or void the product warranty.**

### For AC Operation (UV-365MAXMHC only)

- Align the male connector of the lamp to the female connector of the AC adapter and plug them together. Twist the ring on the adapter connector to make a tight connection. Attach the plug to the corresponding AC power source.

### For DC Operation (UV-365MAXMHC only)

- Align the male connector of the lamp to the female connector of the receptacle on the fully charged BP-30A battery pack.
- The Battery Indicator light will be orange when the battery is charged. When the battery is nearly depleted, the light will flash between Red and Orange.

## CARE AND USE OF LITHIUM-ION BATTERY PACK

- Lithium-Ion battery packs provide optimal performance and longevity when operated and stored in a temperature range between 50°F to 77°F (10°C to 25°C), away from direct heat, sunlight, humidity, and extreme cold.
- For long-term storage (more than 30 days), charge the battery to approximately 40–60% capacity before storing. Check the charge level every 3–6 months and recharge as needed to maintain this range.
- Avoid deep discharges. Recharge the battery before it drops below 20% capacity to maximize cycle life. Do not allow the battery to be fully discharged on a regular basis.
- Lithium-Ion batteries are free of toxic heavy metals such as lead, mercury, or cadmium. They typically offer 500–1000+ charge/discharge cycles when properly maintained. Dispose of or recycle according to local regulations and applicable laws.

## MEASURING LAMP INTENSITY

To ensure that your uVisionMAX series lamp is operating at the required UV intensity, it should be checked periodically. Spectro-UV offers a variety of sensors and meters. The AccuPRO™ XP-2000 combines the functionality of a UV and visible light radiometer/photometer and is specially designed to measure UV irradiance with wavelengths of 320–400nm (with peak at 365nm) and visible light from 460–675nm (with peak at 555nm). Other suitable meters include the AccuMAX XRP-3000 radiometer/photometer kit, and AccuELITE XP-3000.

## UV-365MAXHC Technical Details

### KEY FEATURES

- Nominal steady state intensity of 4,500  $\mu\text{W}/\text{cm}^2$  at 15 inches (38cm).
- Large 9.5-inch diameter coverage area at 15 inches (38cm) with a minimum UV-A intensity of 1,000  $\mu\text{W}/\text{cm}^2$  (ASTM E3022-25).
- Less than 1.0 foot-candle (11 lux) emission.
- Long-lasting UV-A lenses.
- Cool running, fanless design.
- Lightweight and rugged construction.
- White Light, LED Inspection Light.
- IP65 Rated: The uVisionMAX Series lamps are protected from total dust ingress and from low pressure jets of water (from all directions).
- Certificate of Conformance (ASTM E3022-25) included.
- Validation Report (Rolls Royce RRES 90061) as required.

### TECHNICAL SPECIFICATIONS

uVisionMAX Series

#### UV-365MAXHC

Height

Length

Width

Weight

Light Source

UV-A (365nm) and white light

7.5 inches

4.25 inches

3.75 inches

4.29lb. (1,946 g) with power supply;

1.94 lb. (880 g) without power supply.

4 UV-A LEDs, 1 white light LED

### ELECTRICAL SPECIFICATIONS

Input: 100-240V AC, 0.9, 50-60 Hz

Output: 15V DC, 2.4A



### POWER CORD SPECIFICATIONS

#### LAMP PART NUMBER

UV-365MAXHC

UV-365MAXHC/F

UV-365MAXHC/FA

UV-365MAXHC/FB

UV-365MAXHC/FBR

UV-365MAXHC/20

UV-365MAXHC/20/F

UV-365MAXHC/20/FB

#### POWER REQUIREMENTS\*

100-120V/50–60Hz (Type A/B)

230V/50Hz (Plug type C/F)

220-240V/50Hz (Plug type I)

230V/50Hz (Plug type G)

220V/60Hz (Plug type N)

100-120V/50–60Hz (Type A/B)

230V/50Hz (Plug type C/F)

230V/50Hz (Plug type G)

\*Each lamp is fitted with an 8-foot cord and the appropriate plug for the country of destination. An optional 20-foot cord is available. The "/20" suffix denotes the 20-foot power cord options.

\*See next page for detailed power cord information.

## UV-365MAXHC POWER SUPPLY INFORMATION

LAMP	COUNTRY	VOLTAGE	CORD LENGTH	PART NUMBER
UV-365MAXHC	US	120	8'	130260
UV-365MAXHC/F	EU	230	8'	130261
UV-365MAXHC/FA	AU / CH	220-240	8'	130262
UV-365MAXHC/FB	UK	230	8'	130263
UV-365MAXHC/FBR	BR	220	8'	130501

LAMP	COUNTRY	VOLTAGE	CORD LENGTH	PART NUMBER
UV-365MAXHC/20	US	120	20'	130264
UV-365MAXHC/20/F	EU	230	20'	130265
UV-365MAXHC/20/FB	UK	230	20'	130325

*\*All power cords include the lower portion of the handle.*

## UV-365MAXMHC Technical Details

### KEY FEATURES

- Nominal steady state intensity of 4,500  $\mu\text{W}/\text{cm}^2$  at 15 inches (38cm).
- Large 9.5-inch diameter coverage area at 15 inches (38cm) with a minimum UV-A intensity of 1,000  $\mu\text{W}/\text{cm}^2$  (ASTM E3022-25).
- Less than 1.0 foot-candle (11 lux) emission.
- Long-lasting UV-A lenses.
- Cool running, fanless design.
- Lightweight and rugged construction.
- White Light, LED Inspection Light.
- IP65 Rated: The uVisionMAX Series lamps are protected from total dust ingress and from low pressure jets of water (from all directions).
- Certificate of Conformance (ASTM E3022-25) included.
- BP-30A Battery and charging set

### TECHNICAL SPECIFICATIONS

uVisionMAX Series

#### UV-365MAXMHC

Height  
Length  
Width  
Weight

Light Source

UV-A (365nm) and white light  
7.5 inches  
4.25 inches  
3.75 inches  
4.29lb. (1,946 g) with power supply;  
1.94 lb. (880 g) without power supply.  
4 UV-A LEDs, 1 white light LED

## ELECTRICAL SPECIFICATIONS

Input: 100-240V AC, 0.9, 50-60 Hz  
Output: 15V DC, 2.4A



## POWER CORD SPECIFICATIONS

### LAMP PART NUMBER

UV-365MAXMHC  
UV-365MAXMHC/F  
UV-365MAXMHC/FA  
UV-365MAXMHC/FB  
UV-365MAXMHC/FBR  
UV-365MAXMHC/20  
UV-365MAXMHC/20/F  
UV-365MAXMHC/20/FB

### POWER REQUIREMENTS\*

100-120V/50–60Hz (Type A/B)  
230V/50Hz (Plug type C/F)  
220-240V/50Hz (Plug type I)  
230V/50Hz (Plug type G)  
220V/60Hz (Plug type N)  
100-120V/50–60Hz (Type A/B)  
230V/50Hz (Plug type C/F)  
230V/50Hz (Plug type G)

\*Each lamp is fitted with an 8-foot cord and the appropriate plug for the country of destination. An optional 20-foot cord is available. The "/20" suffix denotes the 20-foot power cord options.

\*See next page for detailed power cord information.

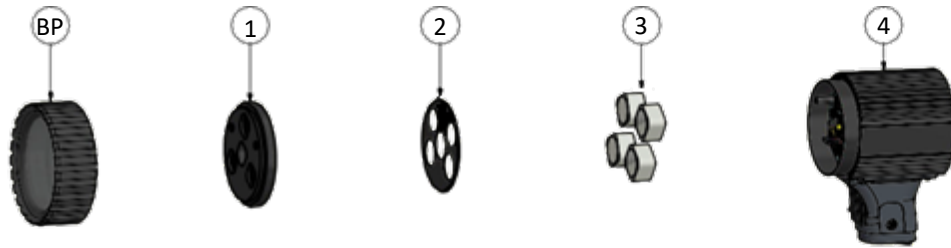
## UV-365MAXMHC POWER SUPPLY INFORMATION

LAMP	COUNTRY	VOLTAGE	CORD LENGTH	PART NUMBER
UV-365MAXMHC	US	120	8'	130260
UV-365MAXMHC/F	EU	230	8'	130261
UV-365MAXMHC/FA	AU / CH	220-240	8'	130262
UV-365MAXMHC/FB	UK	230	8'	130263
UV-365MAXMHC/FBR	BR	220	8'	130501

LAMP	COUNTRY	VOLTAGE	CORD LENGTH	PART NUMBER
UV-365MAXMHC/20	US	120	20'	130264
UV-365MAXMHC/20/F	EU	230	20'	130265
UV-365MAXMHC/20/FB	UK	230	20'	130325

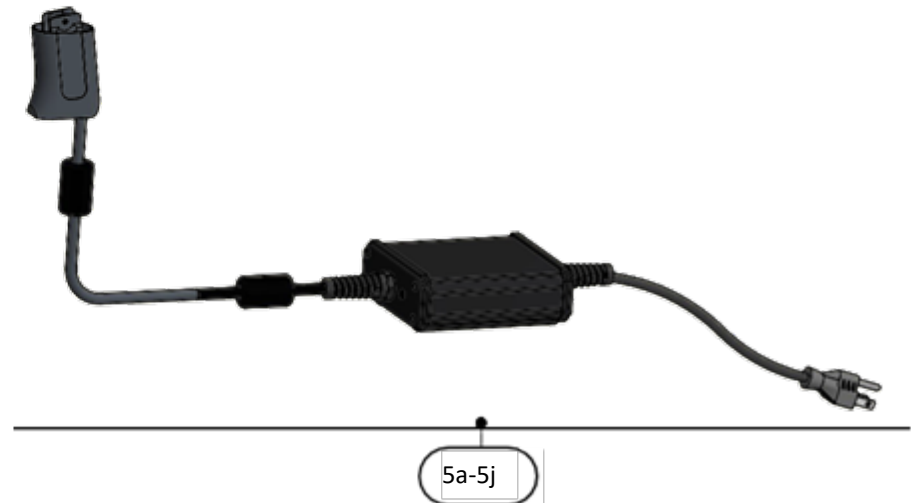
*\*All power cords include the lower portion of the handle*

# UV-365MAXHC EXPLODED VIEW AND REPLACEMENT PARTS



## Replacement Parts

ITEM	QTY	PART NO.	DESCRIPTION
BP	1	FP-600	BOROFLOAT FILTER PROTECTOR
1	1	128196	FRONT COVER PLATE / FILTER ASSEMBLY
2	1	128385	FRONT COVER GASKET
3	4	UL-110-MAX	UV-A LENS
4	1	130336	LAMP HOUSING ASSEMBLY
5a	1	130260	POWER SUPPLY, 8', 120V, US
5b	1	130261	POWER SUPPLY, 8', 230V, EU
5c	1	130262	POWER SUPPLY, 8', 240V, AUS/CN
5d	1	130263	POWER SUPPLY, 8', 230V, UK
5e	1	130501	POWER SUPPLY, 8', 220-240V, BR
5f	1	130264	POWER SUPPLY, 20', 120V, US
5g	1	130265	POWER SUPPLY, 20', 230V, EU
5h	1	130324	POWER SUPPLY, 20', 240V, AUS/CN
5i	1	130325	POWER SUPPLY, 20', 230V, UK
5j	1	130500	POWER SUPPLY, 20', 220-240V, BR



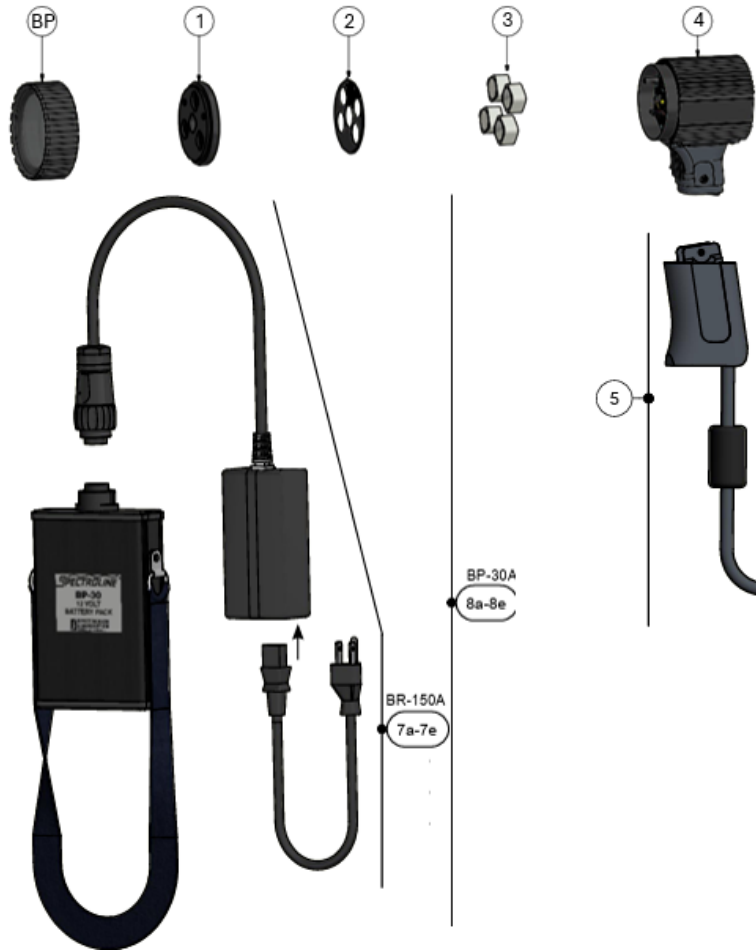
## Accessories

QTY	PART NO.	DESCRIPTION
1	140005	PROTECTIVE CARRYING CASE (for 8' models)
1	128333	PADDED CARRYING CASE (for 20' models)
1	UVS-30	UV-ABSORBING SPECTACLES

## Dimensions and Weight of the Power Supply

Length: 5 inches  
 Width: 4.5 inches  
 Height: 1.875 inches  
 Weight: 2.35 lb. (including power cables)

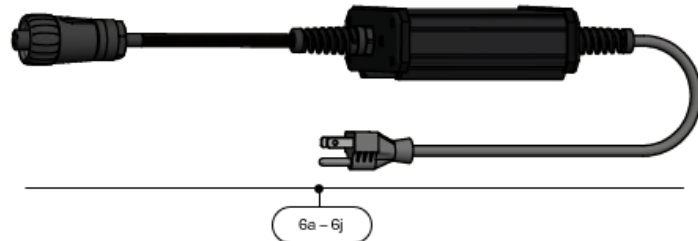
## UV-365MAXMHC EXPLODED VIEW AND REPLACEMENT PARTS



ITEM	QTY	PART NO.	DESCRIPTION
7a	1	BP-30A	BATTERY PACK, 120V, US
7b	1	BP-30A/F	BATTERY PACK, 230V, EU
7c	1	BP-30A/FA	BATTERY PACK, 220-240V, AU/CH
7d	1	BP-30A/FB	BATTERY PACK, 230V, UK
7e	1	BP-30A/BR	BATTERY PACK, 220-240V, BR
8a	1	BR-150A	SMART CHARGER FOR BP-30A, 120V, US
8b	1	BR-150A/F	SMART CHARGER FOR BP-30A, 230V, EU
8c	1	BR-150A/FA	SMART CHARGER FOR BP-30A, 220-240V, AU/CH
8d	1	BR-150A/FB	SMART CHARGER FOR BP-30A, 230V, UK
8e	1	BR-150A/FBR	SMART CHARGER FOR BP-30A, 220-240V, BR

## Replacement Parts

ITEM	QTY	PART NO.	DESCRIPTION
BP	1	FP-600	BOROFLOAT FILTER PROTECTOR
1	1	128196	FRONT COVER PLATE / FILTER ASSEMBLY
2	1	128385	FRONT COVER GASKET
3	4	UL-110 -MAX	UV-A LENS
4	1	130336	LAMP HOUSING ASSEMBLY
5	1	130297	CORD / HANDLE ASSEMBLY (3.5')
6a	1	130290	POWER SUPPLY, 8', 120V, US
6b	1	130291	POWER SUPPLY, 8', 230V, EU
6c	1	130292	POWER SUPPLY, 8', 240V, AUS/CN
6d	1	130293	POWER SUPPLY, 8', 230V, UK
6e	1	130502	POWER SUPPLY, 8', 220-240V, BR
6f	1	130294	POWER SUPPLY, 20', 120V, US
6g	1	130295	POWER SUPPLY, 20', 230V, EU
6h	1	130322	POWER SUPPLY, 20', 240V, AUS/CN
6i	1	130323	POWER SUPPLY, 20', 230V, UK
6j	1	130503	POWER SUPPLY, 20', 220-240V, BR



## Dimensions and Weight of the Power Supply

Length: 5 inches

Width: 4.5 inches

Height: 1.875 inches

Weight: 2.35 lb. (including power cables)

## Accessories

QTY	PART NO.	DESCRIPTION
1	140005	CARRYING CASE
1	UVS-30	UV-ABSORBING SPECTACLES

**SPECTRO-UV<sup>®</sup>**

[www.Spectro-UV.com](http://www.Spectro-UV.com)

4 Dubon Ct., Farmingdale, NY 11735

866-230-7305