

SPECTRO-UV®

uVisionMAX Series

UV-A/White Light LED NDT Inspection Lamp
Part No. UV-365MAXZHC

TESTED
TO COMPLY WITH



ASTM E3022-25
Standard



ISO 3059:2012



RRES 90061:2014



AIRBUS

AITM6-1001
Issue 15



Pratt & Whitney

UV-A Inspection
Requirements



RoHS
Compliant



SPECTRO-UV®

www.Spectro-UV.com

4 Dubon Ct., Farmingdale, NY 11735
866-230-7305



WARNING

**UV emitted from this product. Avoid eye and skin exposure to unshielded products.
FOR PROFESSIONAL EXAMINATION USE ONLY**

IMPORTANT SAFETY INSTRUCTIONS (Read all instructions)

- Do not operate the **uVisionMAX Series UV-A/White Light LED NDT Inspection Lamp** if the lamp has been damaged.
- Do not look directly into the light. **ALWAYS** wear the UV-absorbing protective glasses provided when operating the lamp. Use in low-light conditions to achieve the best inspection results. The darker the room, the greater the fluorescent contrast.
- The uVisionMAX is not approved for use in hazardous atmospheres. Do not attempt to use it in areas requiring explosion-proof lighting.
- Never use this equipment in any manner not specified in these instructions because your protection may be impaired.
- **NEVER** aim the lamp in the direction of another human being. **It is meant for professional fluorescent inspections ONLY!**
- **DO NOT** attempt to modify the lens assembly or light output. Doing so may alter the performance and intensity of the uVisionMAX.

OPERATION

- The lamp has a three-position rocker power switch (II – UV; O – off; I – white light) on the handle.
- The uVisionMAX has a White Light Intensity Adjustment Controls located on the back plate of the lamp. The Battery Indicator is also located on the back plate of the lamp. The Battery Indicator light will be Orange when the battery is charged, and the lamp is operating within RRES compliance. When the battery is nearly depleted, the light will flash between Red and Orange.
- The uVisionMAX is designed to automatically shut off if the unit operates outside of RRES compliance standards (UV-365MAXZHC). To turn the unit back ON from a shut off event, turn the lamp OFF and then ON using the three-position rocker switch.
- **WARNING:** Be sure to use genuine uVisionMAX replacement parts. Using another manufacturer's replacement parts could affect product performance and will void the warranty.



DISASSEMBLING THE FILTER PROTECTOR FOR MAINTENANCE

The outer rubber cover/filter holder may be removed periodically to clean the Borofloat® glass filter. To disassemble the Borofloat® Filter Protector (FP-600), first remove the front rubber cover/filter holder. Peel the rubber cover/filter holder toward the front portion of the lamp.



The Borofloat® glass filter will remain inside the protector. To remove the Borofloat® glass filter, peel around the edge of the rubber cover/filter holder and push the glass filter out. To replace or reinsert the Borofloat® glass filter into the rubber cover/filter holder, slide the Borofloat® glass filter into the channel of the rubber cover/filter holder. Manipulate the rubber cover around the filter. Ensure the glass filter is evenly seated.

REPLACING THE UV LENSES

The UV-A lenses covering the four UV-A LEDs must be replaced over time. They will solarize (become cloudy and yellow) from repeated use.

ENVIRONMENTAL SPECIFICATIONS

The uVisionMAX series lamps are designed to be safe under the following conditions:

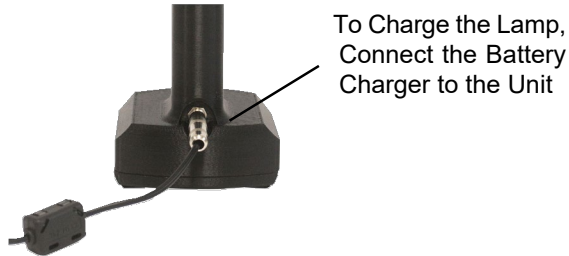
- For Indoor/Outdoor Use (dustproof and protected against jets of water);
- Temperature 41°F to 122°F (5°C to 50°C);
- Mains supply voltage fluctuations do not exceed 10% of the nominal voltage.

LIMITED WARRANTY

The warranty policy for the uVisionMAX lamp is provided on the Certificate of Limited Warranty enclosed separately with each unit. **NOTE:** For assistance of any kind, please contact the Customer Service Department at Spectro-UV. Provide the model, the serial number of the unit, and the date of purchase. The unit's serialization information is located (1) on the packaging the unit is shipped in, (2) engraved on the unit's handle, and (3) labeled on the reverse side of the unit's back plate

CHARGING AND USAGE OF THE LI-ION BATTERY

- Check if the voltage characteristics of the battery charger match the voltage of the AC outlet.
- The lamp will operate for approximately 7+ hours before turning OFF. The UV-365MAXZHC is designed to automatically shut off if the unit operates outside of compliance standards. To turn the unit back ON from a shut off event, turn the lamp OFF and then ON using the three-position rocker switch. The Battery Indicator light will be Orange when the battery is charged, and the lamp is operating within RRES compliance. When the battery is nearly depleted, the light will flash between Red and Orange.
- Only charge indoors on a dry surface. See warning label on charger for more information.
- To avoid short circuits be sure to attach the dust cap to the charger port to keep dry and free from moisture.



To Charge the Lamp,
Connect the Battery
Charger to the Unit

BATTERY LED INDICATOR STATUS
Orange, Power on, battery good
Blink Orange and Red = Low Battery; time left approx. 10 – 15 mins
Red = Dead Battery, approx. 5 minutes or less remaining
Shut Down

CARE AND USE OF LITHIUM-ION (Li-ion) BATTERIES

- Li-ion battery packs last longer when charged and stored in a temperature range between 50°F to 86°F (10°C to 30°C) away from heat, sunlight and humidity.
- Always charge batteries to full capacity before long-term storage (approximately 30 days) to prevent aging. After storage they must be charged, which may require conditioning (two or three charge/discharge cycles) to reach full capacity.
- Do not subject these batteries to repeated deep discharges that run the batteries down completely on a regular basis as this will greatly shorten battery life.
- Li-ion batteries generally have no voltage sag until the last 10% of charge.
- Li-ion batteries have no toxic lead or mercury, and a life expectancy of 500 charge/discharge cycles or more, provided the battery is not overcharged or heavily discharged. Recycle according to local disposal laws.

WARNING: Use only the charger provided with IN-HANDLE and BP-30A battery packs. Do not use chargers intended for other battery chemistries (such as NiMH, NiCd, or lead-acid) or third-party chargers that are not explicitly rated for this model, as doing so may cause overheating, thermal runaway, fire, explosion, permanent battery damage, personal injury, property damage, or void the product warranty.

MEASURING LAMP INTENSITY

To ensure that your uVisionMAX series lamp is operating at the required UV intensity, it should be checked periodically. Spectro-UV offers a variety of sensors and meters. The AccuPRO™ XP-2000 combines the functionality of a UV and visible light radiometer/photometer and is specially designed to measure UV irradiance with wavelengths of 320–400nm (with peak at 365nm) and visible light from 460–675nm (with peak at 555nm). Other suitable meters include the AccuMAX XRP-3000 radiometer/photometer kit, and AccuELITE XP-3000.

UV-365MAXZHC Technical Details

KEY FEATURES

- Long-lasting UV-A lenses.
- Cool running, fanless design.
- Lightweight and rugged construction.
- White Light, LED Inspection Light.
- IP65 Rated: The uVision™ Series lamps are protected from total dust ingress and from low pressure jets of water (from all directions).
- **UV-365MAXZHC:** Nominal steady state intensity of 4,500 $\mu\text{W}/\text{cm}^2$ (+/- 250 $\mu\text{W}/\text{cm}^2$) at 15 inches (38cm).
- Large 9.5-inch diameter coverage area at 15 inches (38cm) with a minimum UV-A intensity of 1,000 $\mu\text{W}/\text{cm}^2$.
- Less than 1.0 foot-candle (11 lux) emission.
- Certificate of Conformance (ASTM E3022-25) included.
- Validation Report (Rolls Royce RRES 90061) as needed.

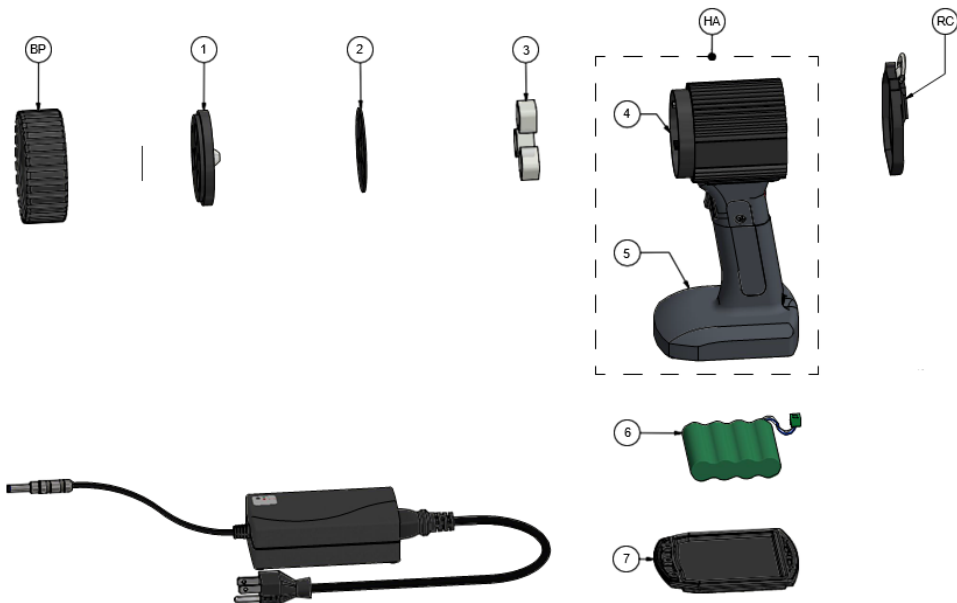
TECHNICAL SPECIFICATIONS

uVisionMAX Series	UV-A (365nm) and white light
Height	9.50 inches
Length	4.65 inches
Width	3.75 inches
Weight	2.65 lb. (1,202 g)
Light Source	4 UV-A LEDs, 1 white light LED

ELECTRICAL SPECIFICATIONS

Battery Charger:
AC Input: 100-240V/50-60Hz, 0.4A
DC Output: 16.8V/1.8A





BATTERY CHARGER INFORMATION

LAMP	COUNTRY	VOLTAGE	CHARGER
UV-365MAXZHC	US	120	130448
UV-365MAXZHC/F	EU	230	130456
UV-365MAXZHC/FA	AU CH	240	130457
UV-365MAXZHC/FB	UK	230	130458
UV-365MAXZHC/FBR	BR	220-240	130540

REPLACEMENT PARTS

Ref.	Part Number	Description
BP	FP-600	FILTER PROTECTOR ASSEMBLY
1	128196	FRONT COVER PLATE FILTER ASSEMBLY
2	128385	FRONT COVER GASKET
3	UL-110-MAX	UV LED LENSES
4	130546	MAIN BODY HOUSING
HA	130336	LAMP HOUSING ASSEMBLY
5	130393	LOWER HANDLE
RC	130397	REAR, RUBBER COVER
6	130395	BATTERY PACK
7	130394	BATTERY COVER