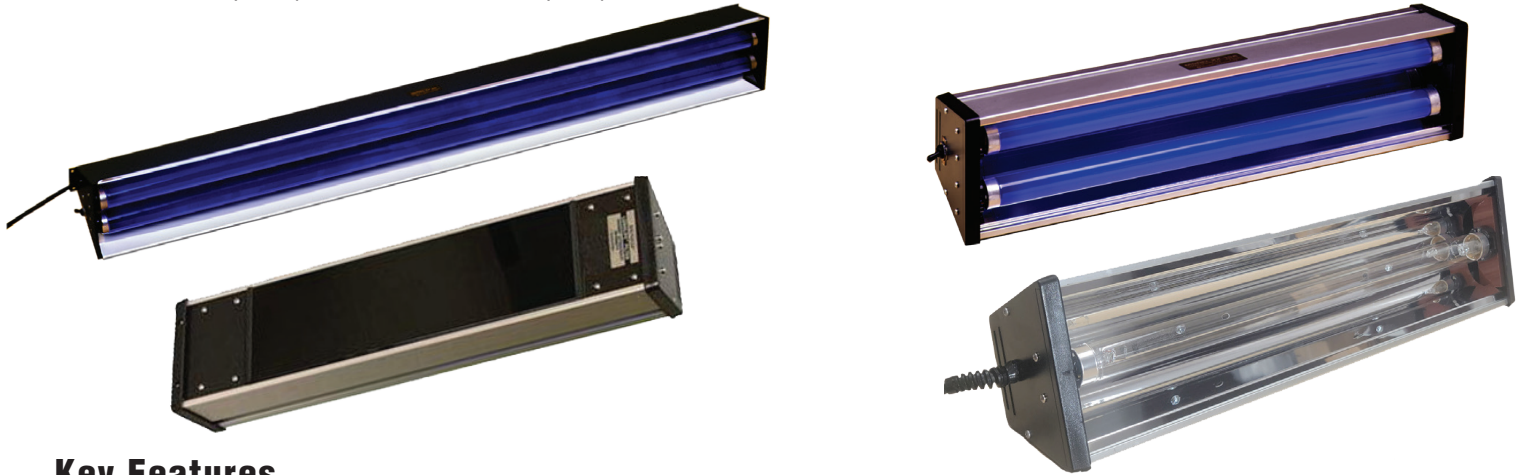


X-SERIES

Bench and Display Lamps

SPECTRO-UV®

Designed for applications requiring high-intensity, wide-area UV coverage in darkened environments. These rugged metal lamps feature sturdy mounting brackets and are available in various combinations of long wave (LW), medium wave (MW), and short wave (SW) UV wavelengths, as well as germicidal options.



Key Features

- **Toggle Switch:** Built-in toggle switch for easy On/Off operation
- **Mounting Brackets:** Outfitted with sturdy metal brackets for easy overhead mounting
- **Durable Construction:**
 - o 15-watt models: Anodized aluminum housing - lightweight and rugged for tough work environments
 - o 40-watt models: Enameled sheet metal housing
- **Aluminum Reflector:** Corrosion-resistant aluminum reflector optimizes UV irradiance
- **Flexible Options:** Available with or without filter assemblies
- **Multiple Configurations:** Single- and double-tube combinations
- **UV Options:** Filtered UV-A and unfiltered UV tubes available

Part Number	Light Source	Power	Wave Length	No of Tubes	Length	Width	Height	Weight	Plug Options
X-15G	UV-C Tube	15 Watts	UV-C (254 nm)	1	18.75 in (47.6 cm)	4.5 in (11.4 cm)	3.5 in (8.9 cm)	6.11 lb (2.77 kg)	USA, Australia, United Kingdom, China, Europe, Japan
XX-15A	UV-A Tube	15 Watts	UV-A (365 nm)	2	18.75 in (47.6 cm)	4.5 in (11.4 cm)	3.5 in (8.9 cm)	6 lb (2.72 kg)	USA, Australia, United Kingdom, China, Europe, Japan
XX-15BF	UV-B/ UV-C Tube	15 Watts	UV-B (312 nm) / UV-C (254 nm)	1/1	18.75 in (47.6 cm)	4.5 in (11.4 cm)	3.5 in (8.9 cm)	7.32 lb (3.32 kg)	USA, Australia, United Kingdom, China, Europe, Japan
XX-15G	UV-C Tube	15 Watts	UV-C (254 nm)	2	18.75 in (47.6 cm)	4.5 in (11.4 cm)	3.5 in (8.9 cm)	7.32 lb (3.32 kg)	USA, Australia, United Kingdom, China, Europe, Japan
XX-40	UV-A Tube	40 Watts	UV-A (365 nm)	2	48 in (121.9 cm)	6 in (15.1 cm)	4 in (10.2 cm)	17 lb (7.71 kg)	USA, Australia, United Kingdom, China, Europe, Japan

SPECTRO-UV®

www.Spectro-UV.com

4 Dubon Ct., Farmingdale, NY 11735
866-230-7305