

PowerMAX™

LED UV-A Panel Flood Lamps

SPECTRO-UV®

PowerMAX™ 365 Series flood lamps feature a panel of powerful UV-A (365 nm) and Visible Light LED's specifically engineered for Nondestructive testing applications. These versatile, stationary light sources can be installed overhead, in line or ganged together with RP-CGPM-01 to provide an even wider range of coverage area. Ideal for NDT inspection booths, fluorescent penetrant and magnetic particle inspection, screening of fluorescent particles, wash station inspection and many other applications requiring maximum uniformity of UV-A coverage over a large area.



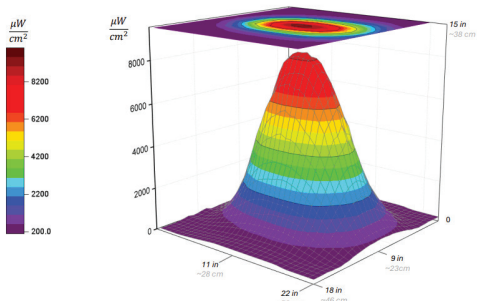
Key Features

- **Dual Light Capability** - Rocker switch easily toggles between UV-A and white light operation
- **High UV-A Intensity** - Nominal steady-state UV-A (365 nm) intensity of 6,500 $\mu\text{W}/\text{cm}^2$ at 15 inches (38 cm)
- **Electronic Intensity Control** - Adjustable light output from 15% to 100%, capable of adjusting down to 1,000 $\mu\text{W}/\text{cm}^2$
- **Low Visible Light Emission** - Less than 0.5 foot-candle (2.2 lux) for optimal fluorescent inspection
- **Integral UV-A Pass Filters** - Reduce visible wavelengths for enhanced inspection quality
- **Rugged Aluminum Housing** - Built for use in the most demanding industrial environments
- **Versatile Mounting Options** - Mountable for overhead inspection or in-line applications
- **Long-Lasting LED Technology** - Durable UV-A and white LEDs for extended service life
- **ASTM E3022 Compliant** - Tested to comply with industry standards
- **Wide Voltage Range** - Compatible with 100V-264V, 50-60 Hz power supply (varies by model)
- **Complete Kit** - Comes with power cord, chain and hooks for immediate installation

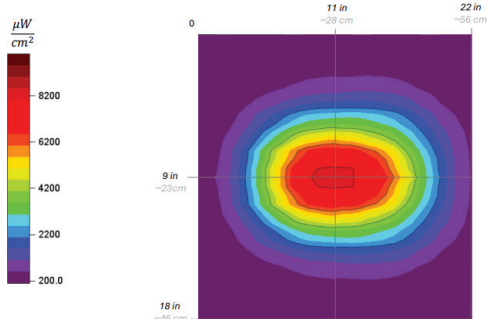
Part Number	ASTM E3022	ISO 3059	RRES-90061	AIRBUS AITM6	PRATT & WHITNEY	Nominal Steady-State UV-A Intensity at 15 in (38 cm)	UV-A Coverage at 15 in (38 cm) at minimum 1,200 $\mu\text{W}/\text{cm}^2$	Power Source	Filter	White Light	Adaptors
PM-8B	X					0 to 6,500 $\mu\text{W}/\text{cm}^2$	10 X 16 in (25.4 X 40.64cm)	AC power 100-240V 50/60 Hz	8 UV-A LEDs & 2 White LEDs	Y	A/B, C/F, I, G, N, I w CCC Config.
PM-16B	X					0 to 8,500 $\mu\text{W}/\text{cm}^2$	18 X 17 in (45 X 43cm)	AC power 100-240V 50/60 Hz	16 UV-A LEDs & 4 White LEDs	Y	A/B, C/F, I, G, N, I w CCC Config.



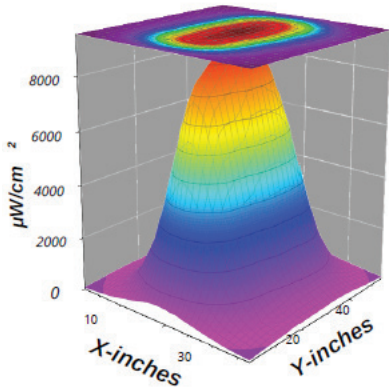
Specification	PM-16B	PM-8B
Light Source	16 UV-A LED's & 4 White LED's	8 UV-A LED's & 2 White LED's
Lamp Style	Panel Flood Lamp	Panel Flood Lamp
Length	19.1 in (48.5 cm)	10 in. (25.4 cm)
Width	6.7 in (17 cm)	8 in (20.32 cm)
Height	3.94 in (10 cm)	5 in (12.7 cm)
Weight	16.5 lb (7.5 kg)	8.9 lb (4 kg)
Intensity Control	From 15% - 100%	From 15% - 100%
Power Requirements	100V - 264V, 50-60 Hz	100V - 120V, 50-60 Hz
White Light Intensity	>325 foot-candle (>3500 Lux)	>325 foot-candle (>3500 Lux)
Visible Light Measurement	<1 foot-candle (<10 lux)	<1 foot-candle (<10 lux)



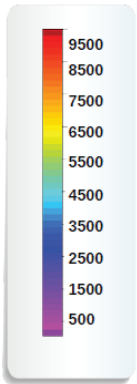
PM-8B



Intensity Profile



PM-16B



X-inches