

TESTED AND COMPLIES WITH



**ASTM**  
E3022-18  
Standard

SPECTRO-UV®

# CLASSIC SERIES

## LED INSPECTION LAMP

CLA-100 + CLA-100Z

- ▶ Nominal steady-state UV-A (365 nm) intensity of **5,700  $\mu\text{W}/\text{cm}^2$**  at 15 in (38 cm)
- ▶ Low visible light emission—less than 0.5 foot-candle (2.2 lux)

**IP65**  
RATED



**Dust Tight &  
Water Resistant**



**Fanless &  
Cool Running**



**Lightweight  
& Rugged**



**Instant-On  
Operation**

### ROCKER SWITCH

Easy on/off operation with rear Rocker switch

### RUBBER BUMPER

Protects LED's from damage

### LONG-LASTING UV-A LENSES

Equipped with UV-A Pass Filter

### ANODIZED ALUMINUM HOUSING

Minimizes corrosion and stands up to years of heavy use

### PISTOL GRIP

Comfortable, balanced control



## CLASSIC SERIES CLA-100 & CLA-100Z

MODEL	BATTERY OPERATED	NOMINAL STEADY-STATE UV-A INTENSITY at 15 in (38 cm) ①	UV-A COVERAGE AREA at 15 in (38 cm) at minimum 1,000 $\mu\text{W}/\text{cm}^2$	VISIBLE LIGHT MEASUREMENT
CLA-100		5,700 $\mu\text{W}/\text{cm}^2$	6 in (15.2 cm)	>350 foot-candle
CLA-100Z	●	5,700 $\mu\text{W}/\text{cm}^2$	6 in (15.2 cm)	>350 foot-candle

① UV-A intensity reading taken with the Spectro -UV® NDT AccuMAX™ Series meter, and is factory set to the value shown.

	CLA-100	CLA-100Z
Light Source:	2 UV-A LED'S & 1 White LED	2 UV-A LED'S & 1 White LED
Lamp Style:	Corded lamp	Cordless lamp
Lamphead Diameter:	4.4 in (11.18 cm)	4.4 in (11.18 cm)
Length:	6.7 in (17 cm)	6.7 in (17 cm)
Width:	3.4 in ( 8.6 cm)	3.4 in ( 8.6 cm)
Height:	7.45 in ( 18.9 cm)	7.45 in ( 18.9 cm)
Weight:	1.76 Lb (0.8 Kg)	2.05 Lb (930 g) (with internal battery)
Power Requirements:	90 - 270 VAC, 50 TO 60 Hz	90 - 270 VAC, 50 TO 60 Hz
Power Cord:	9 Foot	-
Run Time:	-	7 to 8 hours (continuous)
Charge Time:	-	2 hours

### CLA-100 & CLA-100Z

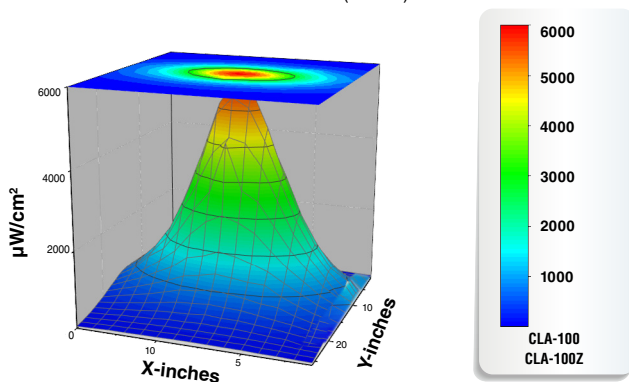
#### Classic Series Dual Function LED Inspection Lamp Kit

Comes complete with Classic Series Dual Function LED Inspection Lamp with lanyard, Smart Charger Power Supply (CLA-100Z only), AC Cord set, UV Absorbing Spectacles, Carrying Case For Spectacles, Protective Carrying Case.

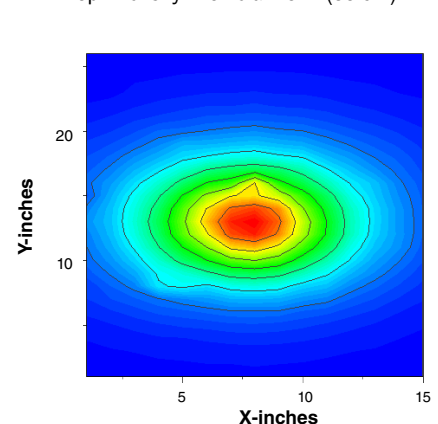


### UV-A Beam Profiles

Surface Contour Profile at 15 in (38 cm)



Top Intensity Profile at 15 in (38 cm)



**SPECTRO-UV®**

[www.Spectro-UV.com](http://www.Spectro-UV.com)

4 Dubon Ct., Farmingdale, NY 11735  
866-230-7305

NDT  
2/24 A10252022-5  
PRINTED IN USA