

LAMP MODEL TEST REPORT

MODEL NUMBER: UV-365MAXMHC

STANDARD: Report per ASTM E3022-25; Type A & B

10. REPORT (Nominal values)	REQUIREMENTS	RESULTS
Maximum Irradiance (7.3)	Report value at 15"	4,500 ± 250 μW/cm ²

Beam Irradiance profile plot (7.4)	Type B ≥ 5 in. (127 mm) at ≥ 1,000 μW/cm ²	9.5 in (241 mm) <i>Figure 2.0</i>
------------------------------------	---	--------------------------------------

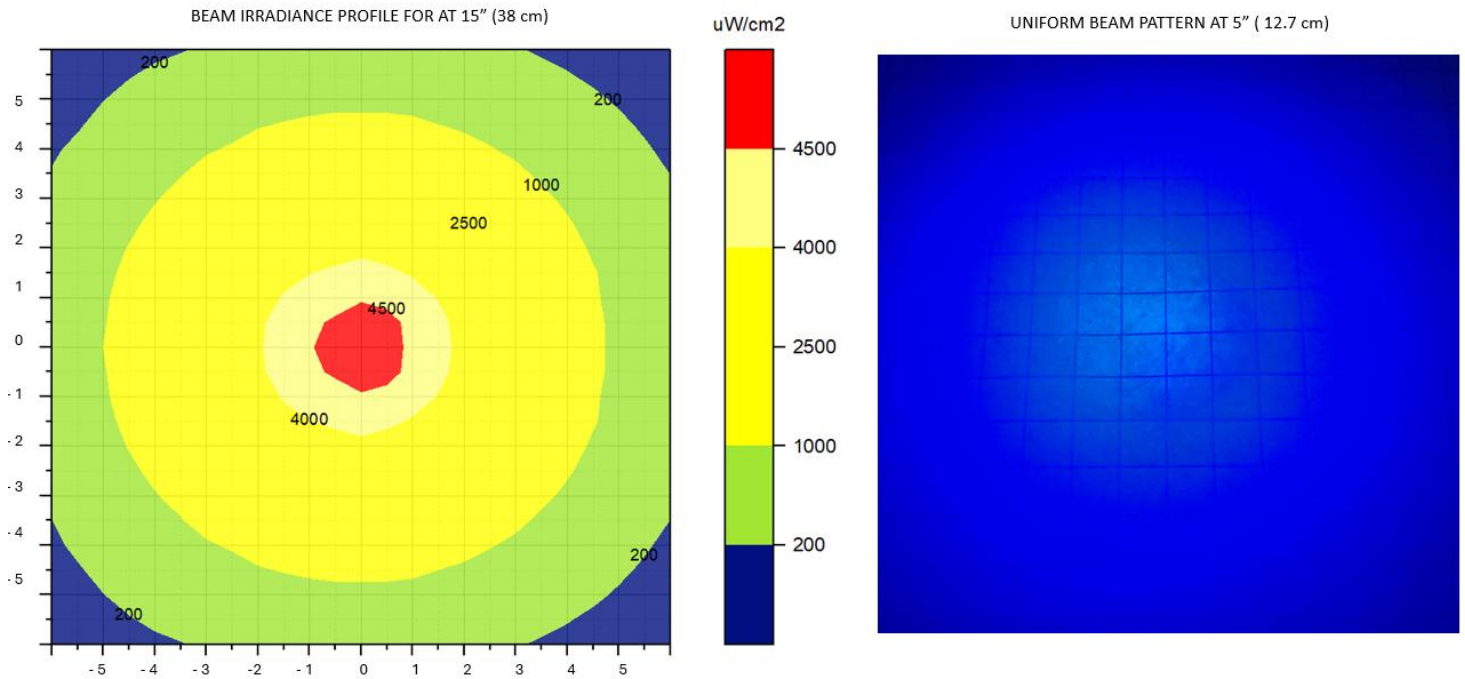


Figure 2.0

Minimum working distance (7.5)	Report	5" (12.7 cm)
--------------------------------	--------	--------------

10.1.4 Ambient testing (switch-on & stabilization: 20 min)

	Requirements	Switch-on	Stabilization
Maximum Housing temperature (7.6.1)	120 °F (48.9 °C)	-	104 °F (40 °C)
Emission spectrum (7.6.4.6)	Report		Figure 3.0

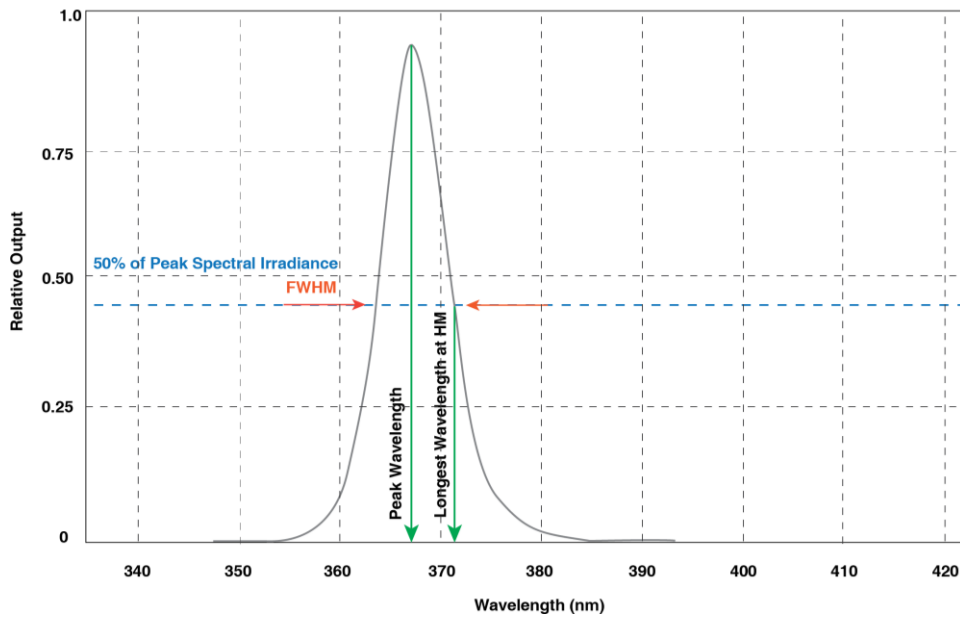


Figure 3.0

Peak wavelength (7.6.4.7)	360 - 370 nm	Switch on 365 ± 2 nm	Stabilization 365 ± 2 nm	Elevated -
FWHM (7.6.4.8)	≤ 15 nm		11 ± 2 nm	
Longest Wavelength at half maximum (7.6.4.8)	max. 377 nm		373 ± 2 nm	
Excitation irradiance (7.6.4.9)	≥ 2000 μW/cm ²	Ambient 4,800 μW/cm ²		Elevated -
Current ripple (7.6.5)	≤ 5% (PP)		0.2 %	

10.1.5 At Elevated Temperature (At stabilization only: 20 min)

Emission spectrum (7.6.4.6)	Report	Figure 4.0
-----------------------------	--------	------------

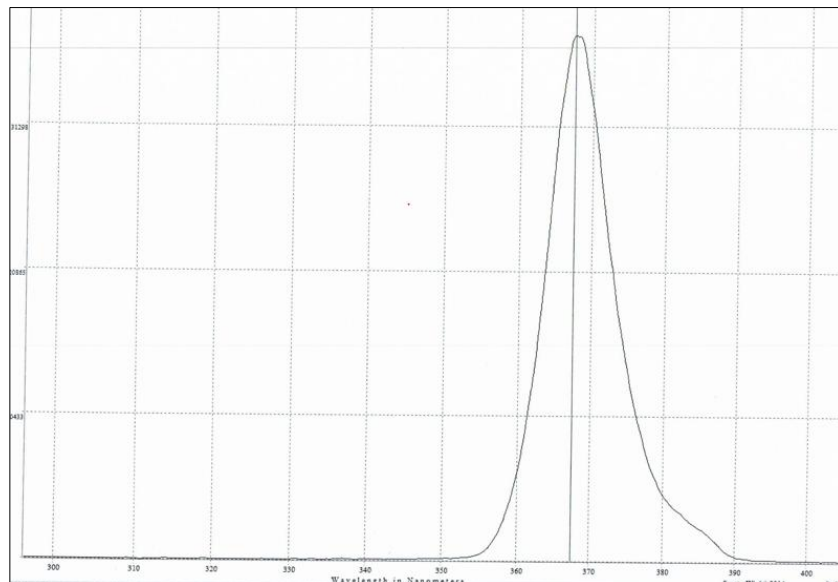


Figure 4.0

Peak wavelength (7.6.4.7)	360 - 370 nm	Switch on -	Stabilization -	Elevated 366 ± 2 nm
FWHM (7.6.4.8)	≤ 15 nm			11 ± 2 nm
Longest Wavelength at half maximum (7.6.4.8)	377 nm			374 ± 2 nm
Excitation irradiance (7.6.4.9)	≥ 2000 μW/cm ²	Ambient -		Elevated 4,250 μW/cm ²
Current ripple (7.6.5)	≤ 5% (pp)			0.2%
Maximum operating temperature	120 °F (43.3 °C)			108 °F (42 °C)

10.1.6 Typical Battery Discharge Time

Typical battery discharge time	At Irradiance level below 1,000 μW/cm ²	Approx 420 min
--------------------------------	--	----------------

Discharge plot

Report

Figure 5.0

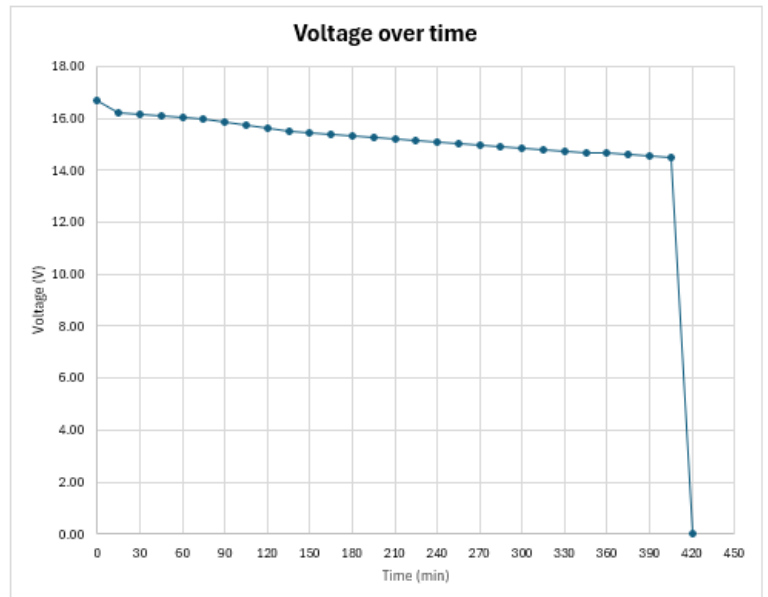


Figure 5.0

10.1.7 Filter Transmittance

Figure 6.0

<i>Filter Transmittance (7.8)</i>	380 nm ≤ 85%	68%
	400 nm ≤ 30%	10%
	420 nm ≤ 5%	0%
	425 to 670 nm ≤ 0.2%	0%
<i>Filter Thickness</i>	Measure & report minimum value	0.13 in (3.3 mm)

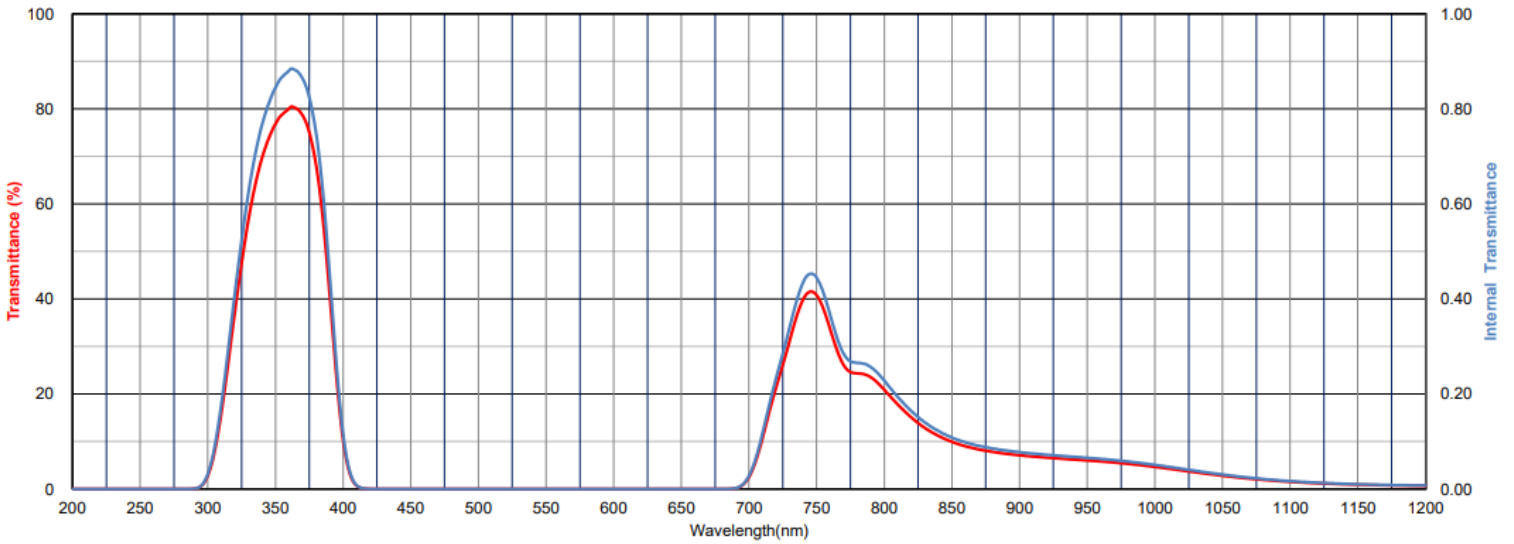


Figure 6.0