

MODEL	NOMINAL STEADY-STATE UV-A (365 nm) INTENSITY ① at 15 in (38 cm)	VISIBLE LIGHT MEASUREMENT at 15 in (38 cm)	UV-A COVERAGE AREA (at minimum 1,200 $\mu\text{W}/\text{cm}^2$) at 15 in (38 cm)
SPN-VIN365	Range 4,500-5,500 $\mu\text{W}/\text{cm}^2$	< 1 foot-candle (< 11 lux)	6 in (15.2 cm)

Light Source: 2 UV-A (365 nm) LEDs
Lamp Style: Pistol Grip
Length: (L x W x H) 7.1 x 5.0 x 9.5 in (18 x 12.7 x 24.1 cm)
Weight: 2.1 lbs (0.95 kg)
Power Requirements: AC power (main AC power cord supplied with the unit)
(Available in 100-120V, and 220-240V versions)

① UV-A intensity reading taken with the Spectro-UV® AccuMAX™ Series meter, and are factory set to the values shown.


**CERTIFICATE OF
LIGHT OUTPUT**
included with lamp

SPECTRO-UV
CERTIFICATE OF LIGHT OUTPUT

This is to certify the below referenced item meets the UV-A lamp Output Measurements (intensity) for LED UV-A light, producing a Peak Wavelength at 365 - 370 nm (365 is 5 nm) as measured with a spectroradiometer, in accordance with EN 120-2005 (2013) requirements.

Product Name: Vintage™ Lamp
Product Number: SPN-VIN365
Serial Number: _____

The following light output measurements were obtained using a Spectro-UV® AccuMAX™
UV-A Intensity Range 0.500 - 6,000 $\mu\text{W}/\text{cm}^2$

UV-A Intensity: _____
UV-A Intensity Range 0.500 - 6,000 $\mu\text{W}/\text{cm}^2$
Visible light reading @ 555 nm: 0.5 - 10.75 lux - 10.75 lux

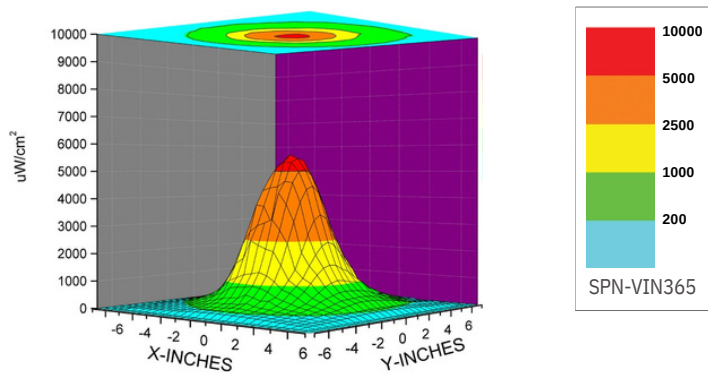
Inspector: _____
Date: _____


David Wilson
Quality Manager
Spectro-UV

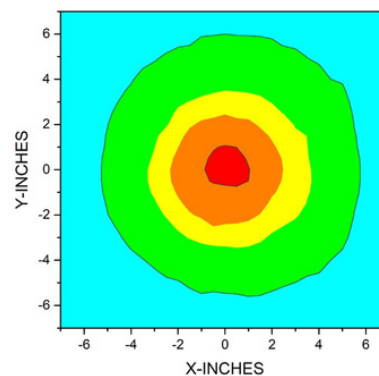
SPECTRO-UV CORPORATION
We declare accurate and truthful for this product. We warrant the product for 1 year.

UV-A Beam Profiles

Surface Contour Profile at 15 in (38 cm)



Top Intensity Profile at 15 in (38 cm)



SPECTRO-UV
www.Spectro-UV.com
4 Dubon Ct., Farmingdale, NY 11735
866-230-7305

DISTRIBUTED BY:

NDT
06/2 A19048-3
PRINTED IN USA

MEETS STANDARDS FOR



EN ISO:3059

SPECTRO-UV®

VintageTM 365

CLASSIC DESIGN
MODERN TECHNOLOGY
ECONOMIC PRICE

Handheld LED UV-A Inspection Lamp

SPN-VIN365



VINTAGE ERGONOMIC DESIGN

Classic design with
modern LED technology



COST EFFECTIVE

Quality lamp at economic price



WIDE BEAM PROFILE

Light output equivalent
to classic HID lamps



FANLESS DESIGN

Cool running and efficient



CONTROL SWITCH

Grip-mounted,
rocker switch

2 LONG-LASTING LEDS PROTECTED BY LENSES

Wide coverage, reduced
rate of solarization

CLASSIC PISTOL GRIP

Comfortable,
balanced control