

MEETS STANDARDS FOR



EN ISO:3059

SPECTROLINE®  
NDT

# Vintage<sup>TM</sup> 365

CLASSIC DESIGN  
MODERN TECHNOLOGY  
ECONOMIC PRICE

Handheld LED UV-A Inspection Lamp

SPN-VIN365



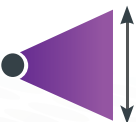
## VINTAGE ERGONOMIC DESIGN

Classic design with  
modern LED technology



## COST EFFECTIVE

Quality lamp at economic price



## WIDE BEAM PROFILE

Light output equivalent to  
classic HID lamps



## FANLESS DESIGN

Cool running and efficient



### CONTROL SWITCH

Grip-mounted,  
rocker switch

### 2 LONG-LASTING LEDs PROTECTED BY LENSES

Wide coverage, reduced  
rate of solarization

### CLASSIC PISTOL GRIP

Comfortable,  
balanced control

MODEL	NOMINAL STEADY-STATE UV-A (365 nm) INTENSITY at 15 in (38 cm) ①	VISIBLE LIGHT MEASUREMENT at 15 in (38 cm)	UV-A COVERAGE AREA (at minimum 1,200 $\mu\text{W}/\text{cm}^2$ ) at 15 in (38 cm)
SPN-VIN365	5,500 $\mu\text{W}/\text{cm}^2$	< 1 foot-candle (< 11 lux)	6 in (15.2 cm)

Light Source:	2 UV-A (365 nm) LEDs
Lamp Style:	Pistol Grip
Length: (L x W x H)	7.1 x 5.0 x 9.5 in (18 x 12.7 x 24.1 cm)
Weight:	2.1 lbs (0.95 kg)
Power Requirements:	AC power (main AC power cord supplied with the unit) (Available in 100-120V, and 220-240V versions)

① UV-A intensity reading taken with the Spectroline® AccuMAX™ Series meter, and are factory set to the values shown.

  
**CERTIFICATE OF  
LIGHT OUTPUT**  
included with lamp


**SPECTROLINE®**  
**CERTIFICATE OF LIGHT OUTPUT**


This is to certify the below referenced item meets the UV-A Lamp Output Measurements (intensity) for 150-160 nm, producing a Peak Wavelength of 365-370 nm (285-315 nm) as measured with a spectroradiometer, in accordance with EN 609 3059-2012(2013) requirements.

Product Name: Vintage™ Lamp  
Product Number: SPN-VIN365  
Serial Number: \_\_\_\_\_

The following block light measurements were obtained using a Spectroline® AccuMAX™ 20,000 and 500,000  $\mu\text{W}/\text{cm}^2$  (5,000 and 125,000 mW/cm²).

**15.150 Lamp Source**  
UV-A Intensity range @ 365 nm: 5,000 - 5,000  $\mu\text{W}/\text{cm}^2$   
Visible light reading @ 555 nm: 0.5 - 1.0  $\mu\text{W}/\text{cm}^2$  (0.25 - 0.50 lux)

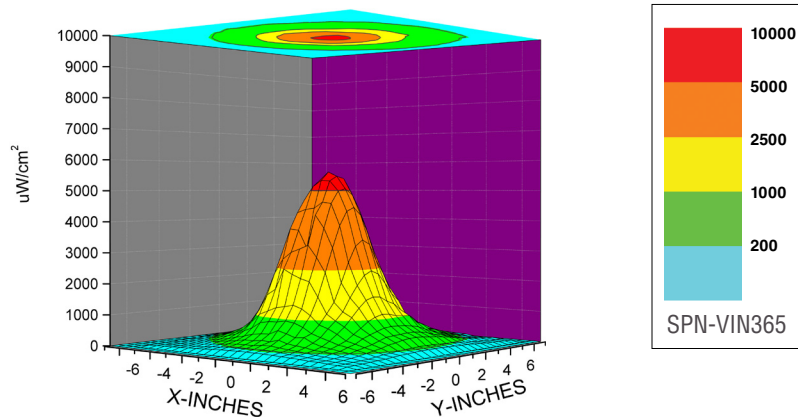
Inspector:   
Date: \_\_\_\_\_

  
Sine Board  
Quality Manager  
© 2015 Spectroline

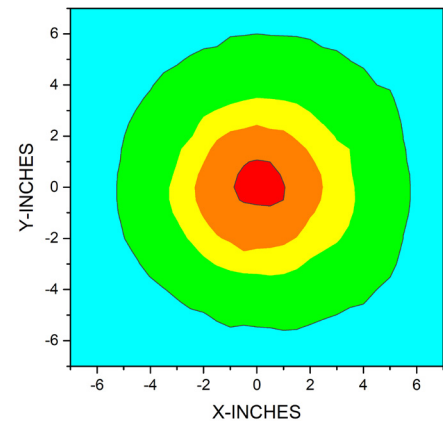
SPECTROLINE CORPORATION  
100 SPECTROLINE RD. WESTPORT, NY 11796-1700 • TEL: 815.355.8800 • WWW.SPECTROLINE.COM

## UV-A Beam Profiles

Surface Contour Profile at 15 in (38 cm)



Top Intensity Profile at 15 in (38 cm)



**SPECTRO-UV**  
www.Spectro-UV.com  
4 Dubon Ct., Farmingdale, NY 11735  
866-230-7305

DISTRIBUTED BY: