

TESTED TO COMPLY WITH



MEETS  
EN ISO:3059  
Specifications

SPECTROLINE<sup>®</sup>  
NDT

# EDGE™ 13 SERIES

Compliant LED UV-A Flood Lamp

EDG-13HC

High-intensity **ASTM E3022-18** compliant broad-beam flood lamp for overhead nondestructive testing inspections.

**IP65  
RATED**



**Dust Tight &  
Water Resistant**



**NDT Inspection  
Booths**



**Screening of  
Fluorescent Particles**

## **FLEXIBLE ARM**

For mounting at specific angles

## **FANLESS**

Cool running design that uses state-of-the-art heat sinks

## **THERMAL CUT-OFF CIRCUITRY**

Prevents lamp from going out of compliance when internal temperature exceeds specifications

## **INTEGRAL UV-A PASS FILTERS**

Reduce visible wavelengths

## **EASILY MOUNTABLE**

For overhead inspection or in-line applications

## **GANGABLE**

Can be ganged together to provide an even wider coverage area

## **LONG-LASTING UV-A LENSES**

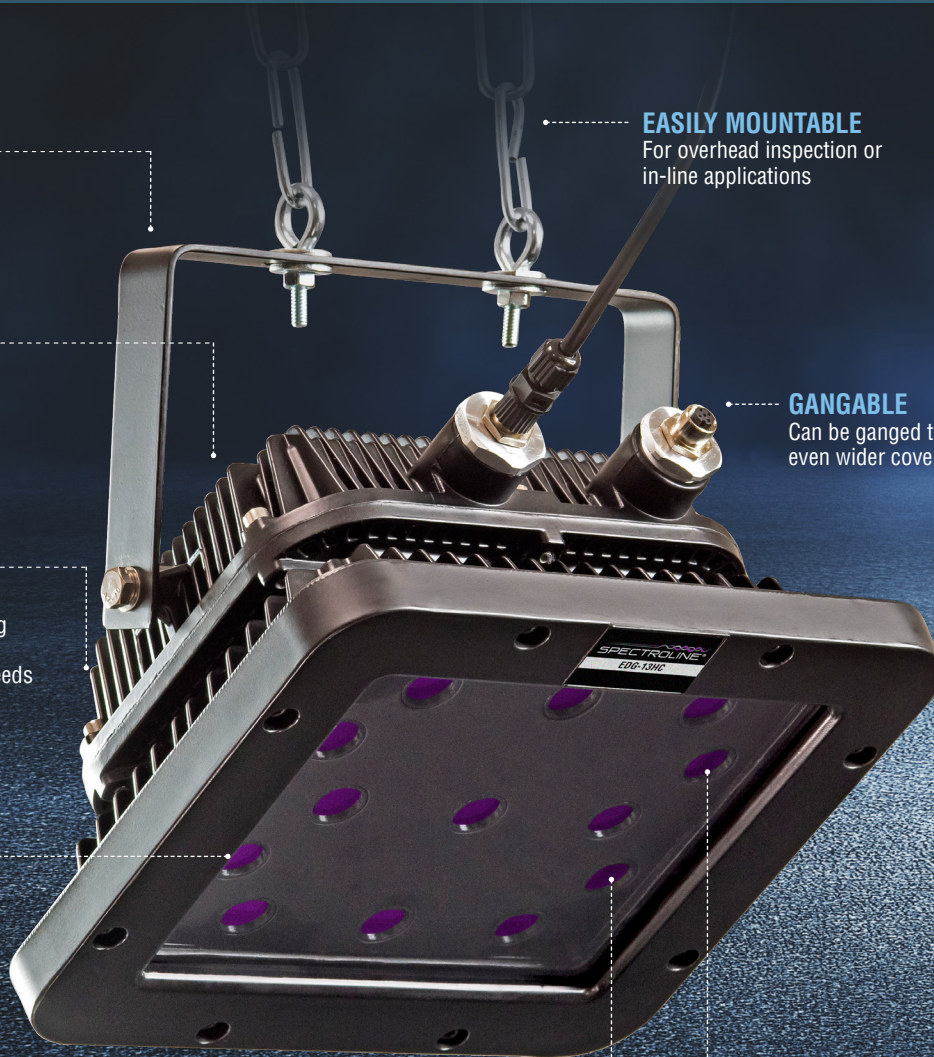
Virtually eliminate clouding/solarization

## **13 UV-A LEDs**

Provides large area of coverage for the largest, most even overhead beam available



**CERTIFICATE OF  
CONFORMANCE**  
included with each lamp



EDGE™ 13 SERIES EDG-13HC

MODEL	NOMINAL STEADY-STATE UV-A (365 nm) INTENSITY at 15 in (38 cm) ①	VISIBLE LIGHT MEASUREMENT	UV-A COVERAGE AREA (at minimum 1,000 µW/cm²)
EDG-13HC	8,500 µW/cm²	< 1 foot-candle (11 lux)	17 x 17.5 in (43.2 x 44.45 cm)

Light Source:	(13) UV-A (365 nm) LEDs
Lamp Style:	Panel flood lamp
Length: (L x W x H)	11 x 14 x 9 in (28 x 36 x 23 cm)
Weight:	14 lb (6.4 kg)
Power Requirements:	AC power (main AC power cord supplied with the unit) (Available in 100-120V, 230V and 240V versions)

① UV-A intensity reading taken with the Spectroline® AccuMAX™ Series meter, and are factory set to the values shown.

SPECTROLINE certified by ISO 9001:2015		
Page 2 of 6		
CERTIFICATE OF CONFORMANCE		
MODEL NUMBER: EDG-13HC STANDARD: ASTM E3022, Type A	SERIAL NUMBER: PART NUMBER:	
APPARATUS 6.0	MANUFACTURER	MODEL NUMBERS
UV-A/Visible Meter (6.1)	Spectroline Corporation	AccuMAX 200™ Spectrophotometer (6.2)
Spectrophotometer (6.2)	Starline Test	UVI25, NIB 3-25
Spectrophotometer (6.3)	Starline Test	UVI25, NIB 3-25
LAMP ACCEPTANCE TEST (8.1)	Requirement	At Ambient T(5°C) (Distribution, 55 min)
Maximum Irradiance (7.3)	At 15 inches (38 cm)	µW/cm²
Emission Spectrum (7.6.4.1)	Micro range 300-400nm	See Figure 1.0 - Fig. 2
Peak Wavelength (7.6.4.7)	365 to 370nm	nm
FWHM (7.6.4.8)	432nm	nm
Longest Wavelength at Half Maximum (7.6.4.9)	< 420nm	nm
UV-A/LED Visible Measurement (8.5) at 15 in (38 cm)	< 2.5 (24 lux)	fc ( Lux )
Inspector:		Steven Skard - Quality Manager
Date:		
300 South Hollow Rd, Westbury, NY 11590 • PHONE: 516-333-6800 • FAX: 516-333-4858 • WWW.SPECTROLINE.COM		

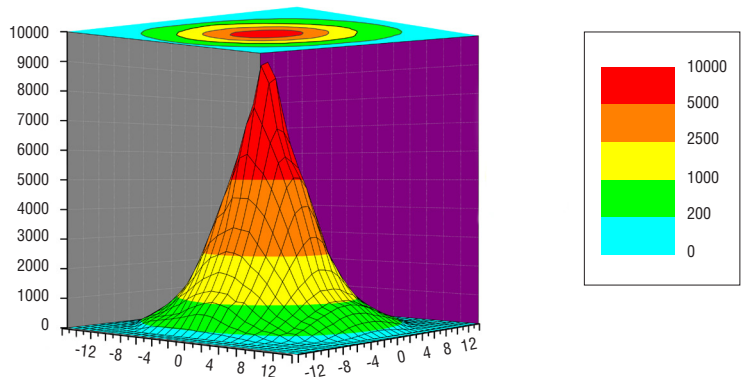
For applications requiring extremely large coverage area, the EDGE™ 13 can be quickly ganged together.

\*Optional accessory: ganged cables with connectors (130156)

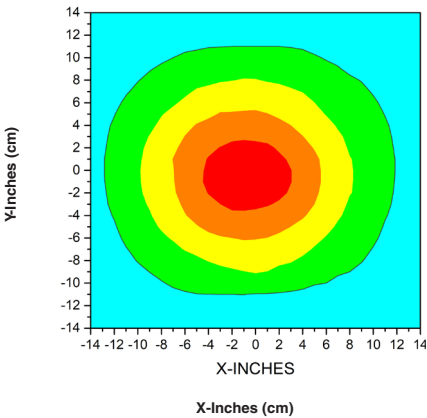


UV-A Beam Profiles

Surface Contour Profile at 15 in (38 cm)



Top Intensity Profile at 15 in (38 cm)



DISTRIBUTED BY: