

SPECTROLINE®

X Series

Bench Lamp

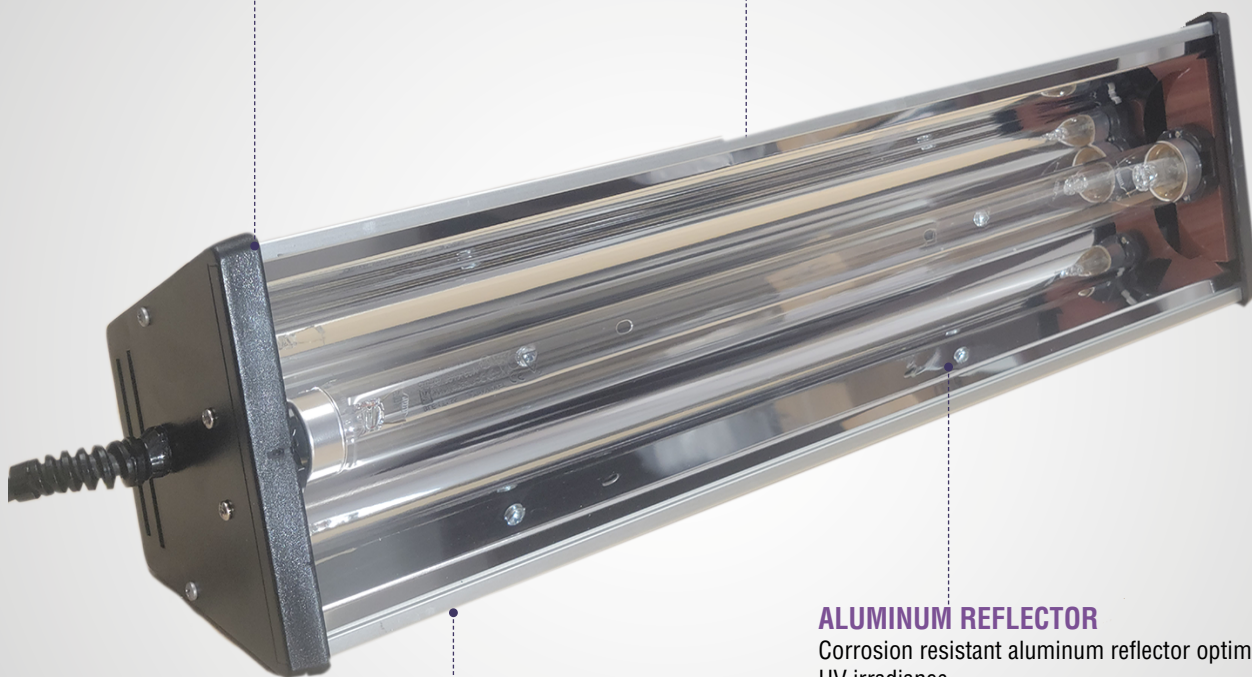
X-15G + XX-15A + XX-15BF + XX-40

MOUNTING BRACKETS

Outfitted with sturdy metal brackets for easy overhead mounting

TOGGLE SWITCH

Built in toggle switch for easy On/Off operation

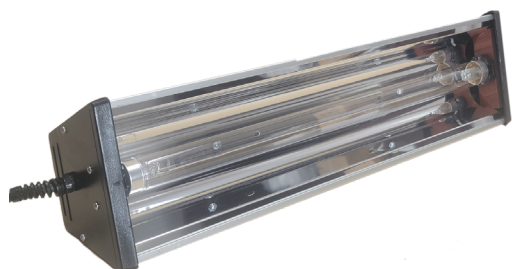


ALUMINUM REFLECTOR

Corrosion resistant aluminum reflector optimizes UV irradiance

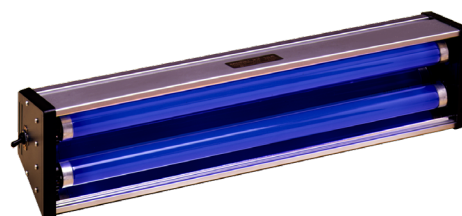
ANODIZED ALUMINUM HOUSING

Lightweight and rugged for the toughest work environments



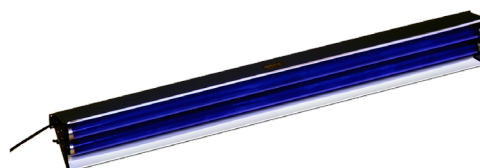
X-15G

XX-15A



XX-15BF

XX-40



	X-15G	XX-15A	XX-15BF	XX-40
Light Source:	UV-A Tube	UV-A Tube	UV-A Tube	UV-A Tube
Lamp Style:	Bench Lamp	Bench Lamp	Bench Lamp	Bench Lamp
Power:	15 Watts	15 Watts	15 Watts	40 Watts
Wave Length:	UV-C (254nm)	UV-A (365nm)	UV-B (312nm) / UV-C (254nm)	UV-A (365nm)
No. Of Tubes:	1	2	1 / 1	2
Length:	18.75 in (47.6 cm)	18.75 in (47.6 cm)	18.75 (47.6 cm)	48 in (121.9 cm)
Width:	4.5 in (11.4 cm)	4.5 in (11.4 cm)	4.5 in (11.4 cm)	6 in (15.1cm)
Height:	3.5 in (8.9 cm)	3.5 in (8.9 cm)	3.5 in (8.9 cm)	4 in (10.2 cm)
Weight:	6.11 lb (2.77 kg)	6 lb (2.72 kg)	7.32 lb (3.32 kg)	17 lb (7.71 kg)
Plug Options:	USA, Australian (/FA), United Kingdom (/FBE), China (/FC), European (/FE), Japan(/J), 12 Volt (/12)			



DISTRIBUTED BY:

www.Spectro-UV.com

4 Dubon Ct., Farmingdale, NY 11735
866-230-7305