

MEETS STANDARDS FOR



**EN ISO:3059**

on UV-A output for the removal of excess penetrant

**SPECTROLINE**<sup>®</sup>  
NDT

# EDGE™ 4

## LED UV-A Overhead Wash Station Lamp

EDG-4W

The **EDGE™ 4** is a flood lamp engineered specifically for wash stations. It provides a very wide area of coverage without a high intensity. The IP65-rated housing allows the lamp to work in wet and dirty environments. Heat sinks keep the lamp cool without the need for a fan, so no dust or water can enter. Four UV-A LEDs provide a wide, uniform beam that is highly consistent and reliable.

**IP65 RATED**



**Dust-Tight & Water Resistant**



**NDT Wash Stations**



**Wide Coverage Area**

**EASILY MOUNTABLE**  
For overhead inspection or in-line applications

**FANLESS**  
Cool running design that uses state-of-the-art heat sinks

EDG-4W

**FLEXIBLE ARM**  
For mounting at specific angles

**WIDE COVERAGE AREA**

**4 UV-A LEDs**  
Provide large area of coverage

**WATER RESISTANT!**



**UV-A LENSES**  
Virtually eliminate clouding/solarization

**IP65 RATED**



**CERTIFICATE OF LIGHT OUTPUT**  
included with lamp

# EDGE™ 4

## LED UV-A Overhead Wash Station Lamp



CERTIFICATE OF LIGHT OUTPUT

	EDG-4W
<b>Nominal Steady-State Intensity</b> <sup>Ⓞ</sup> at 48 in (122 cm)	1,400 µW/cm <sup>2</sup>
<b>UV-A Coverage Area</b> at 48 in (122 cm) at minimum 200 µW/cm <sup>2</sup>	22 x 22 in (56 x 56 cm)
<b>Nominal Steady-State Intensity</b> <sup>Ⓞ</sup> at 72 in (183 cm)	670 µW/cm <sup>2</sup>
<b>UV-A Coverage Area</b> at 72 in (183 cm) at minimum 200 µW/cm <sup>2</sup>	24 x 24 in (61 x 61 cm)
<b>Nominal Steady-State Intensity</b> <sup>Ⓞ</sup> at 96 in (244 cm)	380 µW/cm <sup>2</sup>
<b>UV-A Coverage Area</b> at 96 in (244 cm) at minimum 200 µW/cm <sup>2</sup>	25 x 25 in (63.5 x 63.5 cm)
<b>LED Filter</b>	Protective clear filter

### Technical Features

<b>Light Source:</b>	(4) UV-A LEDs
<b>Lamp Style:</b>	Panel flood lamp
<b>Dimensions (L x W x H):</b>	11 x 14 x 9 in (28 x 36 x 23 cm)
<b>Weight:</b>	14 lb (6.4 kg)
<b>Power Requirements:</b>	AC power (main AC power cord supplied with the unit)*
<b>Cooling System:</b>	Fanless

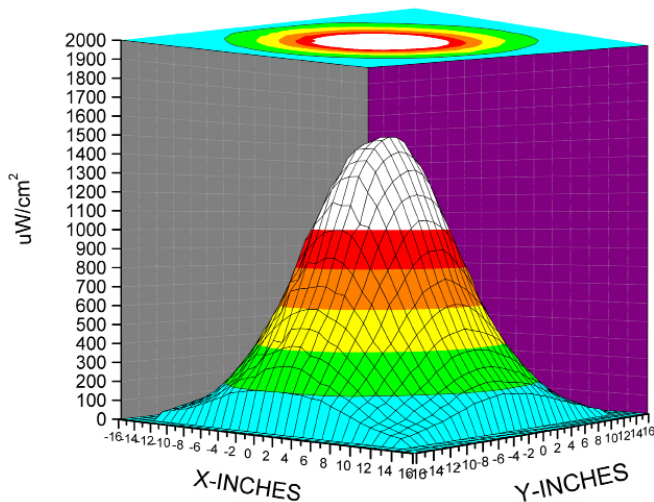
*\*(Also available in 100-120V, 230V and 240V versions)*



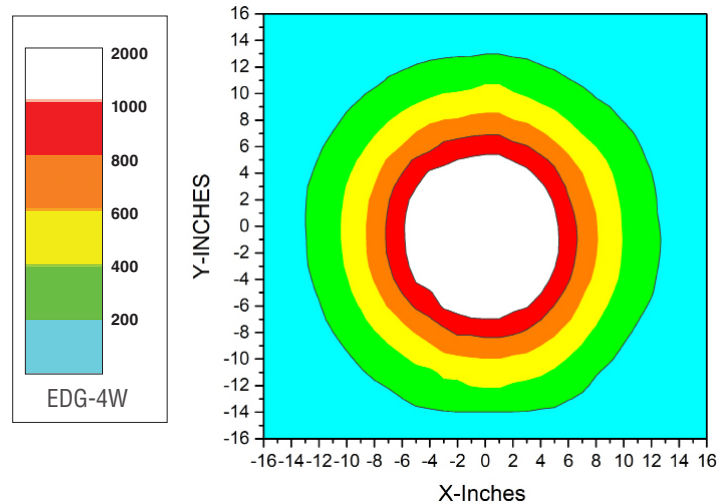
<sup>Ⓞ</sup> UV-A intensity reading taken with the Spectroline® AccuMAX™ Series meter, and is factory set to the value shown.

### UV-A Beam Profiles

Surface Contour Profile for EDG-4W at 4 ft (122 cm)



Beam Irradiance Profile for EDG-4W at 4 ft (122 cm)



www.Spectro-UV.com

4 Dubon Ct., Farmingdale, NY 11735  
866-230-7305